



HRW420-LI

HRW420-LI Battery for Zebra RW420

The HRW420-Li is an upgrade to the OEM P/N AK17463-005 that is used in the Zebra RW420 mobile printer. It provides excellent discharge characteristics and longer cycle life.

Product Features

- Contains the highest quality battery cells
- Provides excellent discharge characteristics
- Provides longer cycle life
- Extends operating time and reduces the total number of batteries needed
- Rigorous testing including temperature, vibration, shock, drop, short circuit, and overcharge



Product Specifications

Capacity: 4000

Chemistry: LI-ION

Voltage: 7.4

Dimensions: 92.71 x 27.13 x 72.86

OEM: ZEBRA

OEM Models: RW420

OEM Part Numbers: AK17463-005

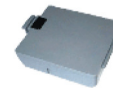
Weight: 220 g

Warranty: 12 MONTHS

Related Products



H16004-LI



H16293-LI



HQL320-LI(3X)

Trademarks, logos, symbols, product names, etc. are the property of their respective owners. Original part numbers are provided to assist in determining compatibility only.

For pricing and additional information contact:

Global Technology Systems, Inc.

550 Cochituate Rd, Suite 15, Framingham, MA 01701

US: 1.800.267.2711 EU: 00800.5390.5390

www.GTSPower.com [@gtspower1](https://twitter.com/gtspower1)